

Balidon Place

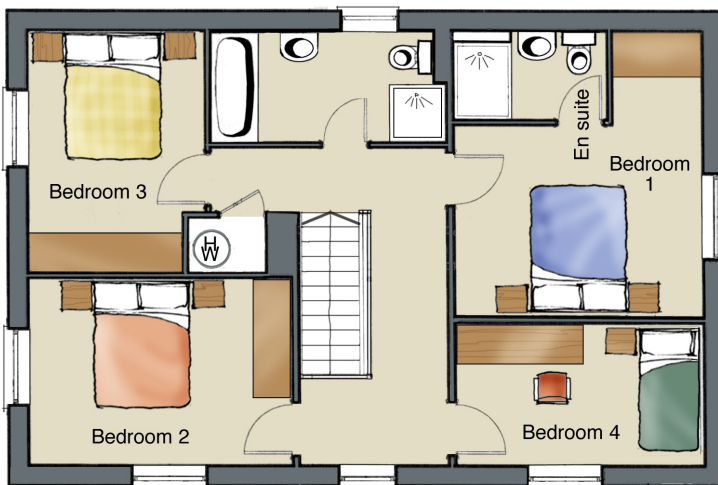
Yeovil

Plot 1
4 Bedrooms
Detached
Double Garage &
Parking Spaces

All artists' impressions, illustrations and dimensions and depictions of furniture are for general information only and do not form part of any contract. Accordingly purchasers should satisfy themselves as to specific plot details with our site sales staff.



First Floor



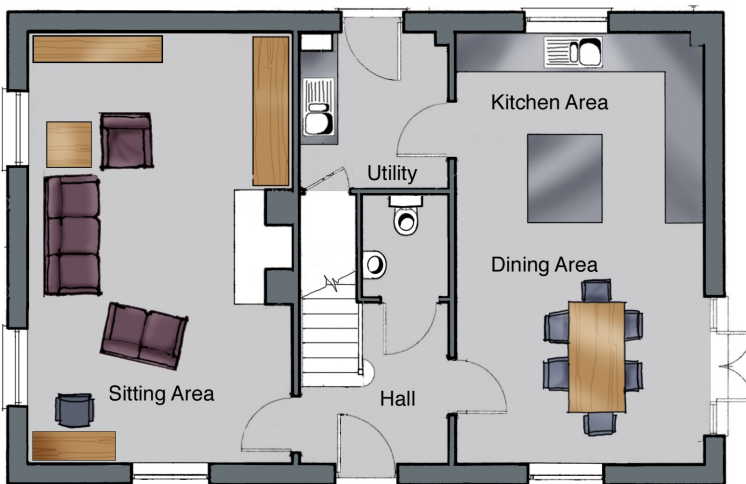
ROOM DIMENSIONS (First Floor)

Bedroom 1: 4.4 x 3.9m
 (14'5" x 12'10") Incl. en suite

Bedroom 2: 4.2 x 2.9m (13'9" x 9'6")

Bedroom 3: 3.7 x 2.8m (max) (12'1" x 9'2")

Bedroom 4: 3.9 x 2.1m (12'10" x 6'10")



ROOM DIMENSIONS (Ground Floor)

Sitting Room: 6.7 x 4.2m (22'0" x 13'9")

Kitchen Area: 3.9 x 3.0m (12'10" x 9'10")

Dining Area: 3.9 x 3.7m (max) (12'10" x 12'1")

Utility: 2.4 x 2.3m (7'10" x 7'7")

Ground Floor