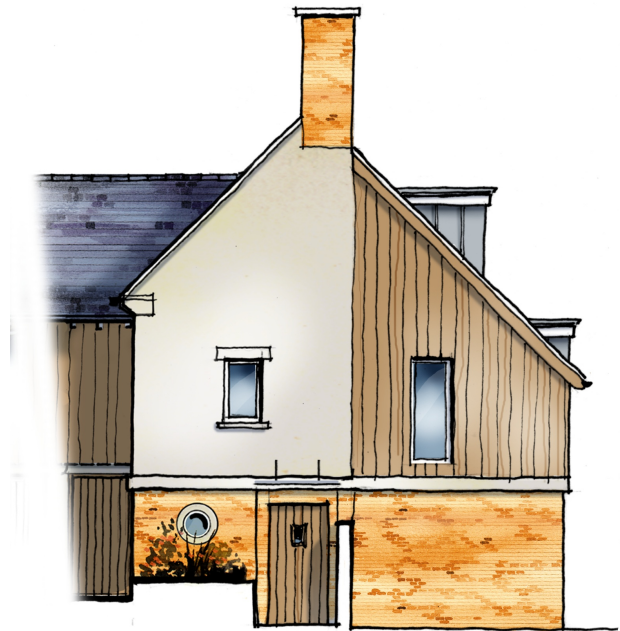


Lower Westport

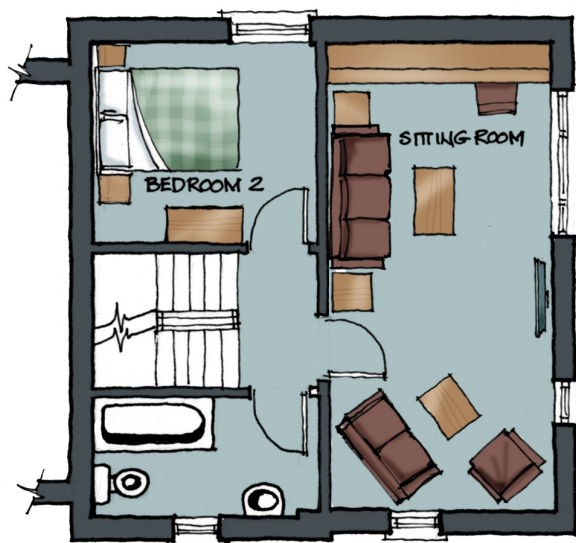
Wareham, Dorset

Plot 1 Amended 20/6/11
Part Detached
3 Bedrooms
Double Garage

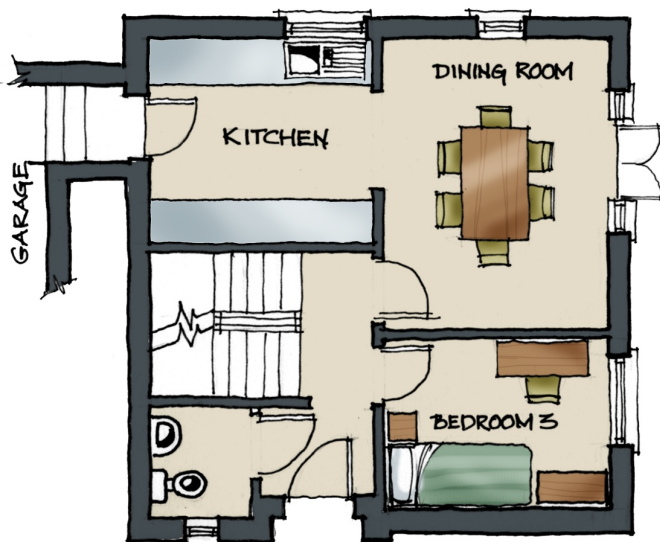
All artists' impressions, illustrations and dimensions and depictions of furniture are for general information only and do not form part of any contract. Accordingly purchasers should satisfy themselves as to specific plot details with our site sales staff.



First Floor



Second Floor



ROOM DIMENSIONS

Sitting Room: 6.6 x 3.2m (max) (21'7" x 10'6")

Kitchen: 3.2 x 2.8m (10'6" x 9'2")

Dining Room: 4.0 x 3.2m (13.1' x 10'6")

Bedroom 1: 5.3 x 4.1m (max)
(17'5" x 13'6") Excl. dressing area & en suite

Bedroom 2: 3.2 x 2.8m (10'6" x 9'2")

Bedroom 3: 3.2 x 2.4m (10'6" x 7'10")

Ground Floor