

Lower Westport

Wareham, Dorset

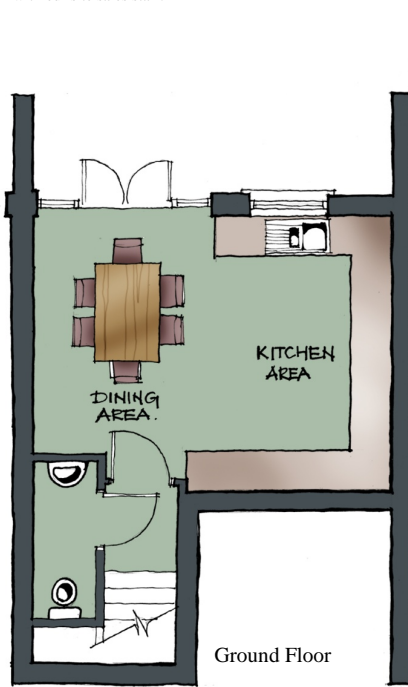
Plots 4 & 5
Town Houses
3 Bedrooms
Single Garage



No 5 No 4
 Plan Shown



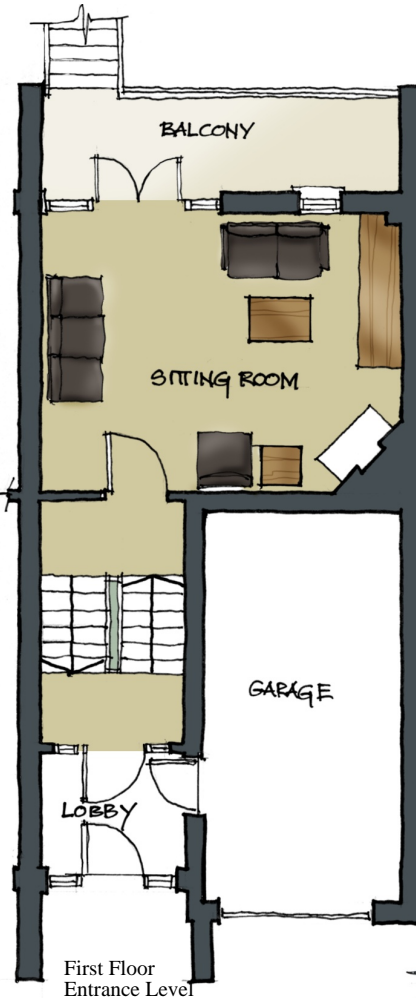
All artists' impressions, illustrations, dimensions and depictions of furniture are for general information only and do not form part of any contract. Accordingly purchasers should satisfy themselves as to specific plot details with our site sales staff.



Ground Floor

ROOM DIMENSIONS (G/F)

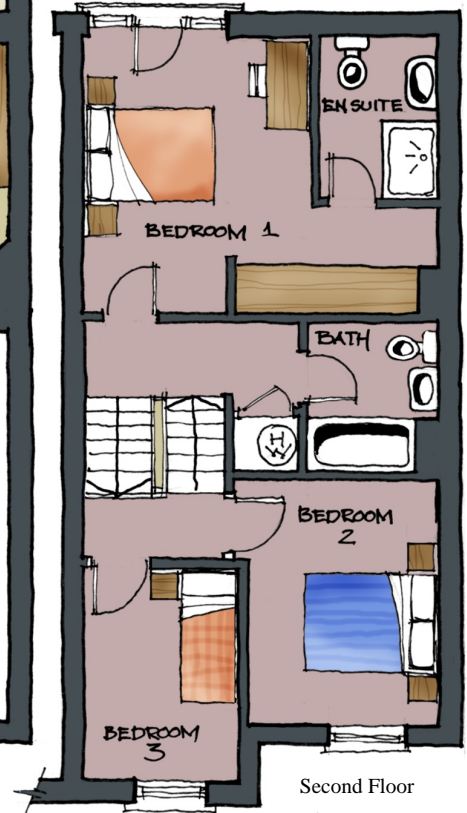
Kitchen Area: 4.2 x 2.7m
 (13'9" x 8'9")
Dining Area: 4.2 x 2.7m (max)
 (13'9" x 8'9")



First Floor
 Entrance Level

ROOM DIMENSIONS (1st Floor)

Sitting Room: 5.4 x 4.2m
 (17'9" x 13'9")
Balcony: 5.4 x 1.2m
 (17'9" x 3'11")



Second Floor

ROOM DIMENSIONS (2nd Floor)

Bedroom 1: 5.4 x 4.2m (max)
 (17'9" x 13'9") Incl. en suite
Bedroom 2: 3.5 x 3.1m (max) (11'5" x 10'2")
Bedroom 3: 3.0 x 2.3m (max) (9'10" x 7'7")