

Balidon Place

Yeovil

Plots 6 & 7

4 Bedrooms

Detached

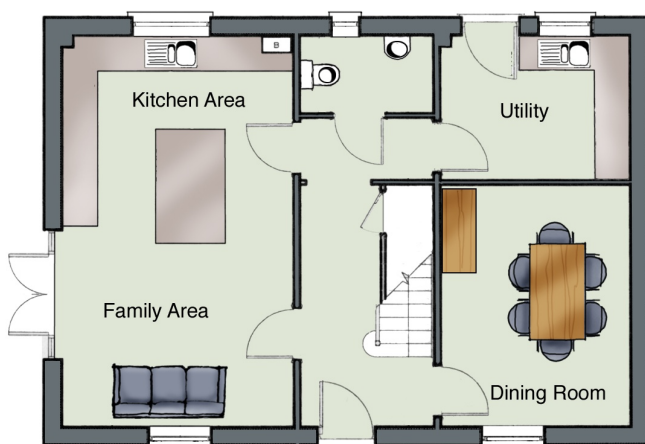
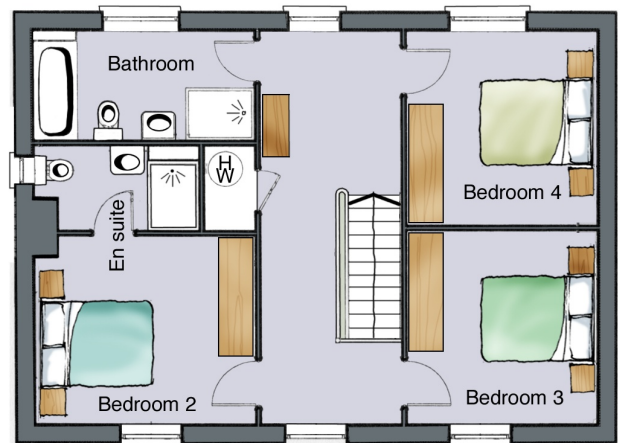
Double Garage & Parking Spaces

All artists' impressions, illustrations and dimensions and depictions of furniture are for general information only and do not form part of any contract. Accordingly purchasers should satisfy themselves as to specific plot details with our site sales staff.



No 7

First Floor



ROOM DIMENSIONS

Kitchen Area: 3.9 x 3.3m (12'10" x 10'9")

Family Area: 3.9 x 3.4m (12'10" x 11'2")

Dining Room: 4.1 x 3.2m (13'6" x 10'6")

Utility: 3.2 x 2.5m (10'6" x 8'2")

Sitting Room: 6.7 x 3.9m (22'0" x 12'10")

Bedroom 1: 4.9 x 3.2m (16'1" x 10'6") Excl. en suite

Bedroom 2: 3.9 x 3.2m (max) (12'10" x 10'6") Excl. en suite

Bedroom 3: 3.3 x 3.2m (10'9" x 10'6")

Bedroom 4: 3.3 x 3.2m (10'9" x 10'6")

Ground Floor of Plot 7
Plot 6 is a mirror image