

# Lower Westport

## Wareham, Dorset

**Plot 6**  
**Town House**  
**3 Bedrooms**  
**Garage plus**  
**Parking Space**

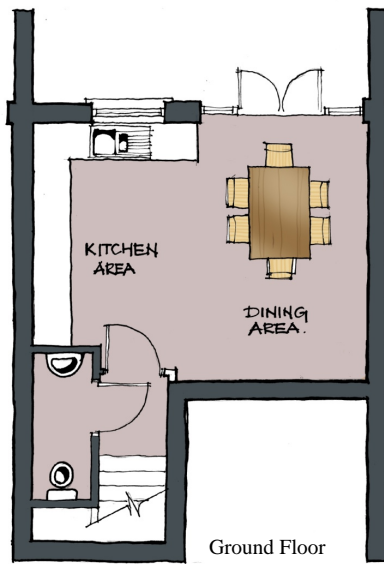
All artists' impressions, illustrations, dimensions and depictions of furniture are for general information only and do not form part of any contract. Accordingly purchasers should satisfy themselves as to specific plot details with our site sales staff.



Front



Garden

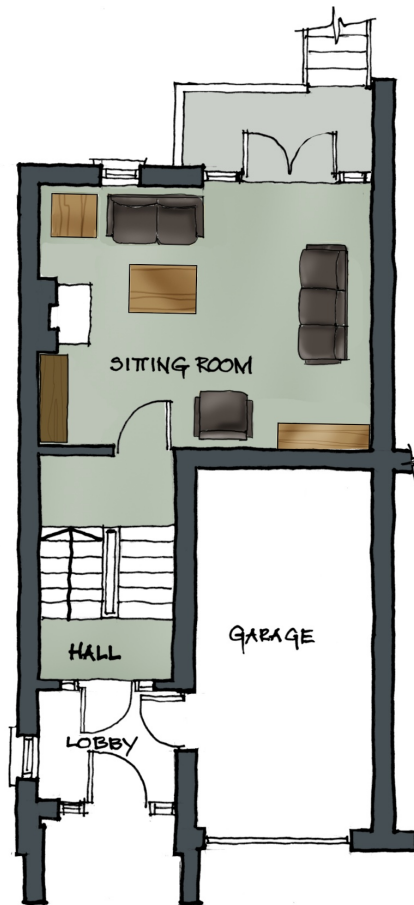


Ground Floor

### ROOM DIMENSIONS (G/F)

**Kitchen Area: 4.2 x 2.7m (max)**  
**(13'9" x 8'9")**

**Dining Area: 4.2 x 2.7m**  
**(13'9" x 8'9")**

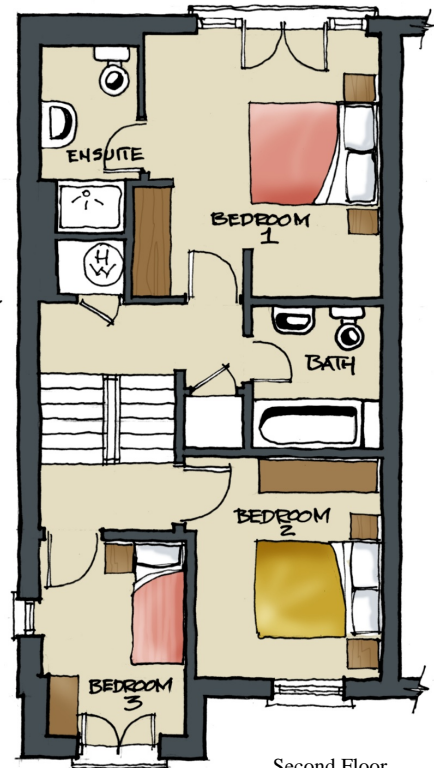


First Floor  
Entrance Level

### ROOM DIMENSIONS (1st Floor)

**Sitting Room: 5.4 x 4.2m**  
**(17'9" x 13'9")**

**Balcony: 3.0 x 1.2m**  
**(9'10" x 3'11")**



Second Floor

### ROOM DIMENSIONS (2nd Floor)

**Bedroom 1: 4.2 x 3.9m (max)**  
**(13'9" x 12'10") Excl. en suite**

**Bedroom 2: 3.5 x 3.1m (max) (11'5" x 10'2")**

**Bedroom 3: 3.0 x 2.3m (max) (9'10" x 7'7")**