

# Lower Westport

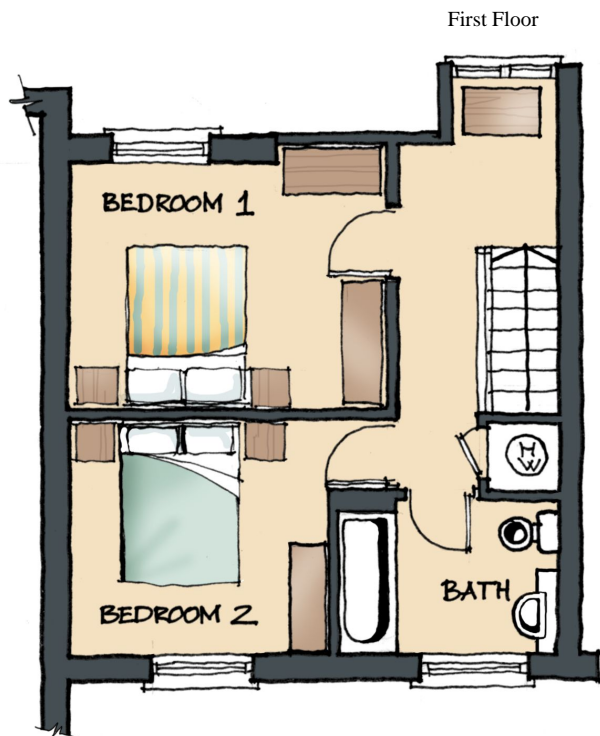
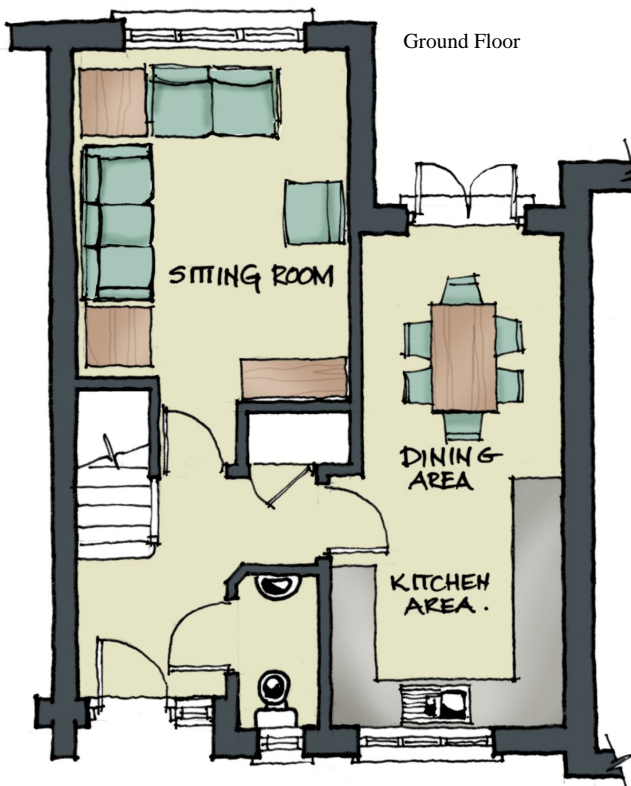
## Wareham, Dorset

**Plots 7 & 8**  
**Semi detached**  
**2 Bedrooms**  
**Garage plus**  
**Parking Space**

All artists' impressions, illustrations, dimensions and depictions of furniture are for general information only and do not form part of any contract. Accordingly purchasers should satisfy themselves as to specific plot details with our site sales staff.



No 8  
 Plan is a mirror image of 7  
 No 7  
 Plan Shown



### ROOM DIMENSIONS (Ground Floor)

Sitting Room: 5.2 x 3.4m (max) (17'1" x 11'2")

Kitchen Area: 3.1 x 3.0m (10'2" x 9'10")

Dining Area: 3.0 x 2.5m (9'10" x 8'2")

### ROOM DIMENSIONS (First Floor)

Bedroom 1: 4.1 x 3.3m (max) (13'6" x 10'9")

Bedroom 2: 3.3 x 2.9m (10'9" x 9'6")