

# Balidon House

## Yeovil

**Plot 16**  
**Ground Floor**  
**Apartment**  
**2 Bedrooms**



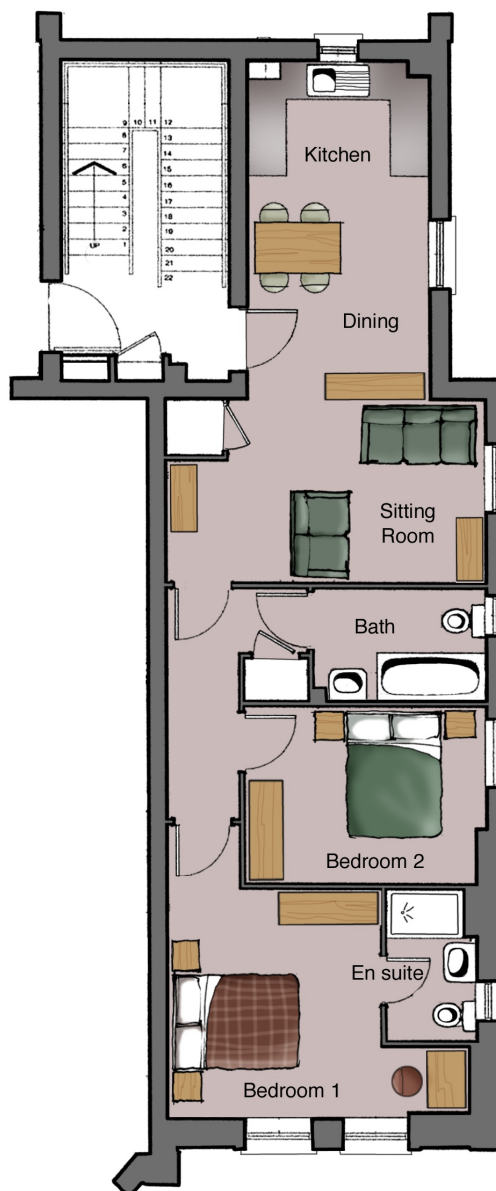
### ROOM DIMENSIONS (First Floor)

**Sitting Area: 4.9 x 4.2m (max) (16'1''x 13'9'')**

**Kitchen/Dining: 3.8 x 2.8m (12'6''x 9'2'')**

**Bedroom 1: 4.7 x 3.5m  
(15'5''x 11'5'') Incl. en suite**

**Bedroom 2: 3.7 x 2.7m (max) (12'1''x 8'9'')**



All artists' impressions, illustrations and dimensions and depictions of furniture are for general information only and do not form part of any contract. Accordingly purchasers should satisfy themselves as to specific plot details with our site sales staff.