

# Balidon House

Yeovil

Plot 22  
1st Floor  
Maisonette  
2 Bedrooms



## ROOM DIMENSIONS

**Sitting/Dining Room: 5.7 x 5.5m (18'8" x 18'0")**

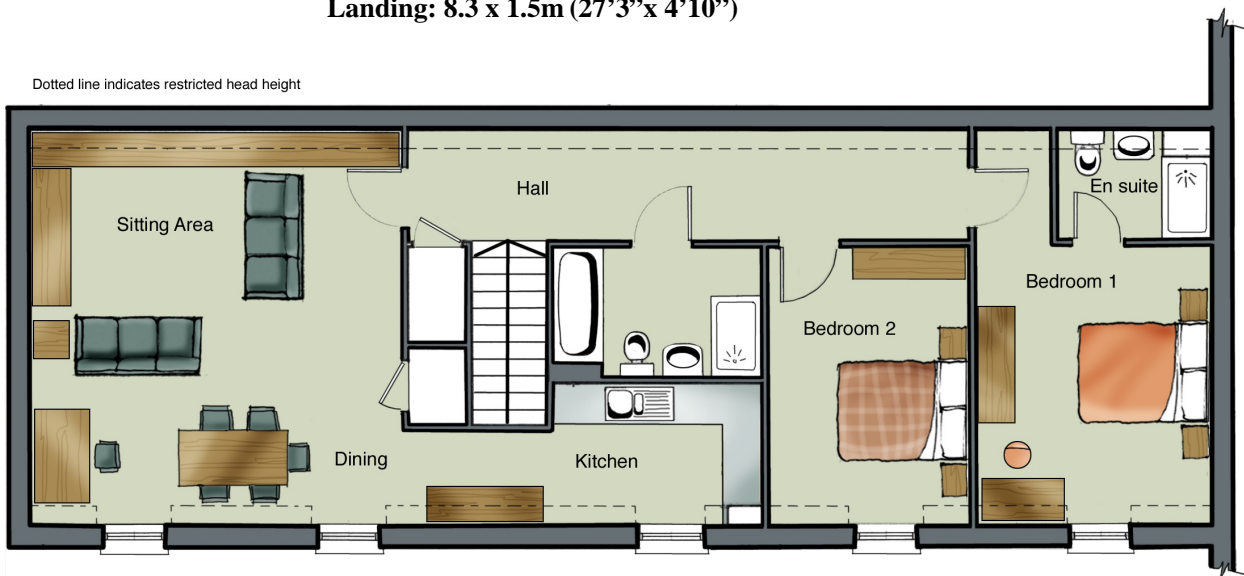
**Kitchen Area: 5.3 x 2.0 (max) 17' 5" x 6'6"**

**Bedroom 1: 5.7 x 3.5m  
(18'8" x 11'5") Incl. en suite**

**Bedroom 2: 4.0 x 2.9m (13'1" x 9'6")**

**Landing: 8.3 x 1.5m (27'3" x 4'10")**

Dotted line indicates restricted head height



All artists' impressions, illustrations and dimensions and depictions of furniture are for general information only and do not form part of any contract. Accordingly purchasers should satisfy themselves as to specific plot details with our site sales staff.