

Poundbury

**Sector 2.24 Building 3
Dorchester**

**Plot 3d
Maisonette
2 Bedrooms
Double Garage**



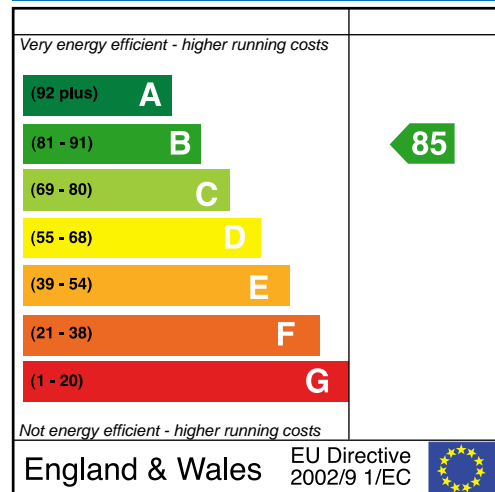
10 YEAR GUARANTEE

FITTINGS SPECIFICATION

- Mains-linked smoke detectors
- NACOSS fitted alarm
- Gas condensing central heating system
- Choice of kitchen units**
- Choice of laminated worktop**
- Integrated dishwasher
- Integrated washer/dryer
- Integrated fridge/freezer
- Electric double oven
- 4 burner gas hob
- White sanitary ware
- Choice of Porcelanosa wall tiles**
- Choice of 11 wall colours**
- Power and light to garage
- Patio to private garden space

** Subject to stage of construction

Predicted Energy Efficiency Rating



The energy efficiency rating is a measure of the overall efficiency of a home. The higher the rating, the more energy efficient the home is and the lower the fuel bills are likely to be.

All artists' impressions, illustrations and dimensions and depictions of furniture are for general information only and do not form part of any contract. Accordingly purchasers should satisfy themselves as to specific plot details with our site sales staff.

Poundbury

Sector 2.24
Dorchester

Plot 3d

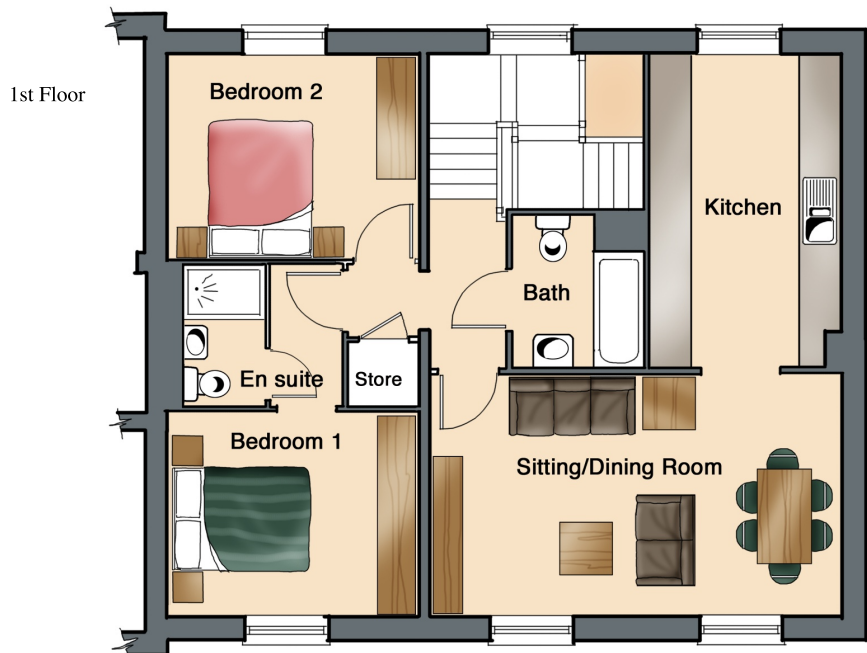
Floor Plans

Furniture layout is shown for guidance only.



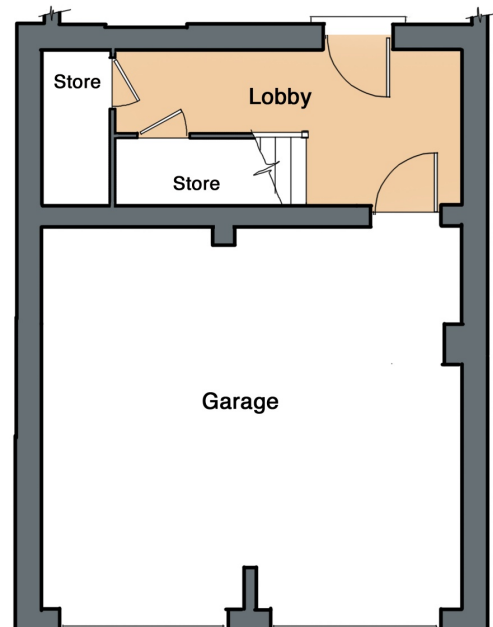
Building 3.

3d.



1st Floor

Ground Floor



ROOM DIMENSIONS

Sitting/Dining Room: 6.0 x 3.5m (19'8" x 11'5")

Kitchen: 4.5 x 2.7m (14'9" x 8'9")

Bedroom 1: 3.6 x 2.9m (11'9" x 9'6" Excl. en suite)

Bedroom 2: 3.6 x 2.9m (11'9" x 9'6")

Ground Floor Lobby: 4.9 x 2.2m (max) (16'1" x 7'3")

All artists' impressions, illustrations and dimensions and depictions of furniture are for general information only and do not form part of any contract. Accordingly purchasers should satisfy themselves as to specific plot details with our site sales staff.