

PLOT 151

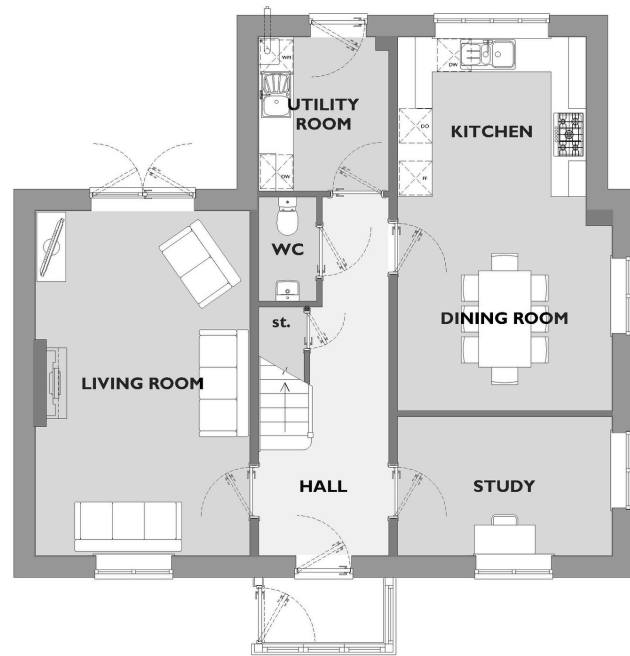
FOUR BEDROOM HOME

GROUND FLOOR

Living Room
3.70 x 5.95m (12'1 x 19'6ft max)

Kitchen / Dining Room
3.70 x 6.45m (12'1 x 21'1ft max)

Study
3.70 x 2.40m (12,1 x 7'10ft max)



GROUND FLOOR

FIRST FLOOR

Bedroom 1
3.25x 3.9m (14'8 x 9'0ft max)
(Dimension excluding recess & wardrobe recess)

Bedroom 2
3.7 x 2.92m (12'1 x 9'6ft max)

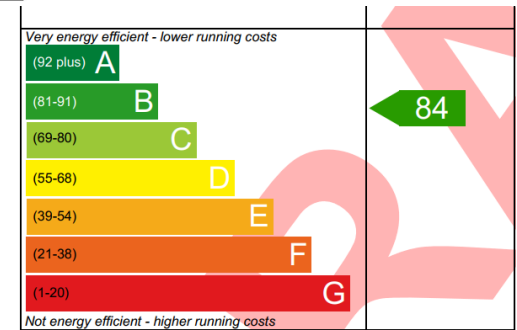
Bedroom 3
3.70 x 2.95m (12'1 x 9'8ft max)

Bedroom 4
3.70 x 2.92m (12'1 x 9'6ft max)



FIRST FLOOR

[View this home online](#)



Please note, floor plans and dimensions are taken from architectural drawings and are for guidance only. Dimensions stated are within a tolerance of plus or minus 50mm. Overall dimensions are usually stated and there may be projections into these.) Furniture shown on floor plans is for illustrative purposes only.

Computer generated images not to scale. Finishes and materials may vary from those shown and landscaping is illustrative only