

PLOT 97

FOUR BEDROOM HOME

FIRST FLOOR

Bedroom 1
3.59 x 4.93m (11'10 x 16'2ft max)
(Dimensions including door recess)

Bedroom 2
3.59 x 2.36m (11'10 x 7'9ft max)

Bedroom 3
3.59 x 3.41m (11'10 x 11'2ft)

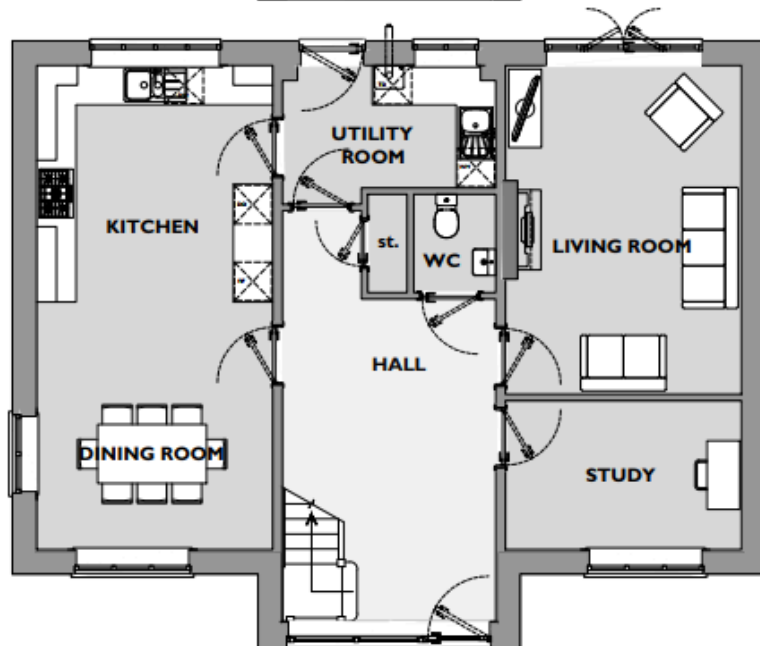
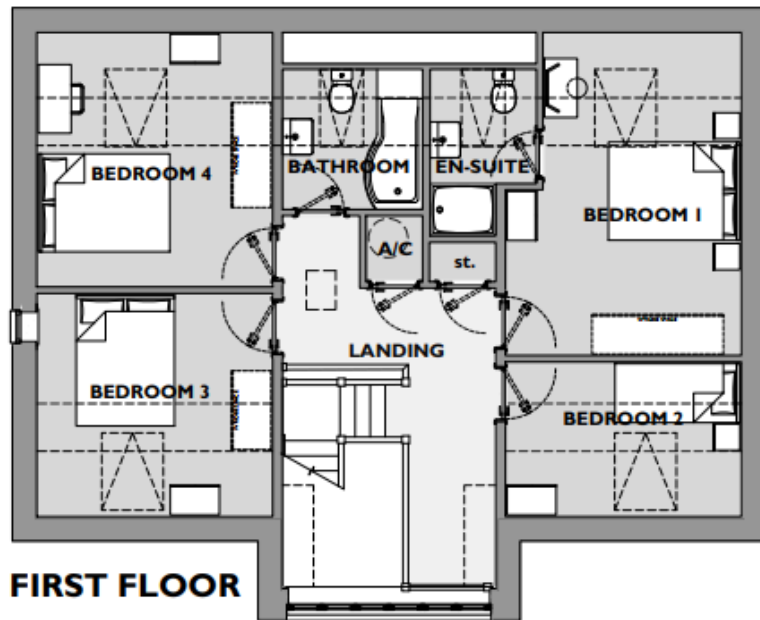
Bedroom 4
3.59 x 3.89m (11'10 x 12'9ft)

GROUND FLOOR

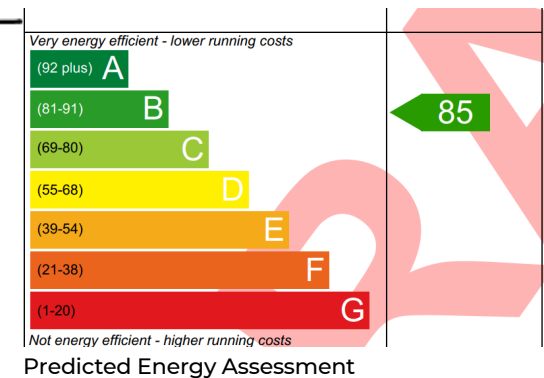
Living Room
3.59 x 5.02m (11'10 x 16'6ft max)

Kitchen / Dining Room
3.59 x 7.40m (11'10 x 24'3ft max)

Study
3.59 x 2.27m (11'10 x 7'6ft max)



[View this home online](#)



Please note, floor plans and dimensions are taken from architectural drawings and are for guidance only. Dimensions stated are within a tolerance of plus or minus 50mm. Overall dimensions are usually stated and there may be projections into these.) Furniture shown on floor plans is for illustrative purposes only.

Computer generated images not to scale. Finishes and materials may vary from those shown and landscaping is illustrative only